



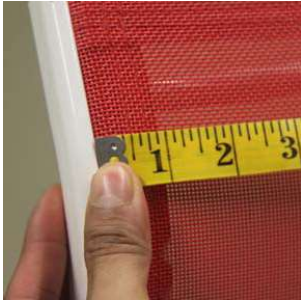
# How To Measure A Chair

Measuring technique applies to one piece chair, two piece chair, love seat and ottoman.

Place your order online for faster service!

## CHAIR BACK

Measure Top Width



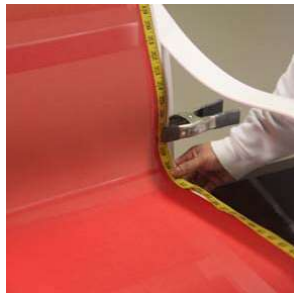
Measure Bottom Width



Starting a few inches down from the end of the metal sling rails, place your tape measure where the fabric disappears into the frame or rail and measure across to the other side. Measure up to the closest 1/4". Repeat for the bottom width.

## CHAIR SEAT

Measure Length



**DO NOT** measure the old sling. Measure on the chair frame with the old sling tightly installed. We will add the necessary fabric for hems and fabric inside the sling rail.

Starting at the top of the chair rail, place your tape measure at the top and follow the metal rail down the length of the chair. Measure up to the closest 1/4".



Record Your Measurements Here:

I Piece Chair	
Top Width	
Bottom Width	
Length	

2 Piece Chair	Seat	Back
Top Width		
Bottom Width		
Length		

Fabric Selection: \_\_\_\_\_

